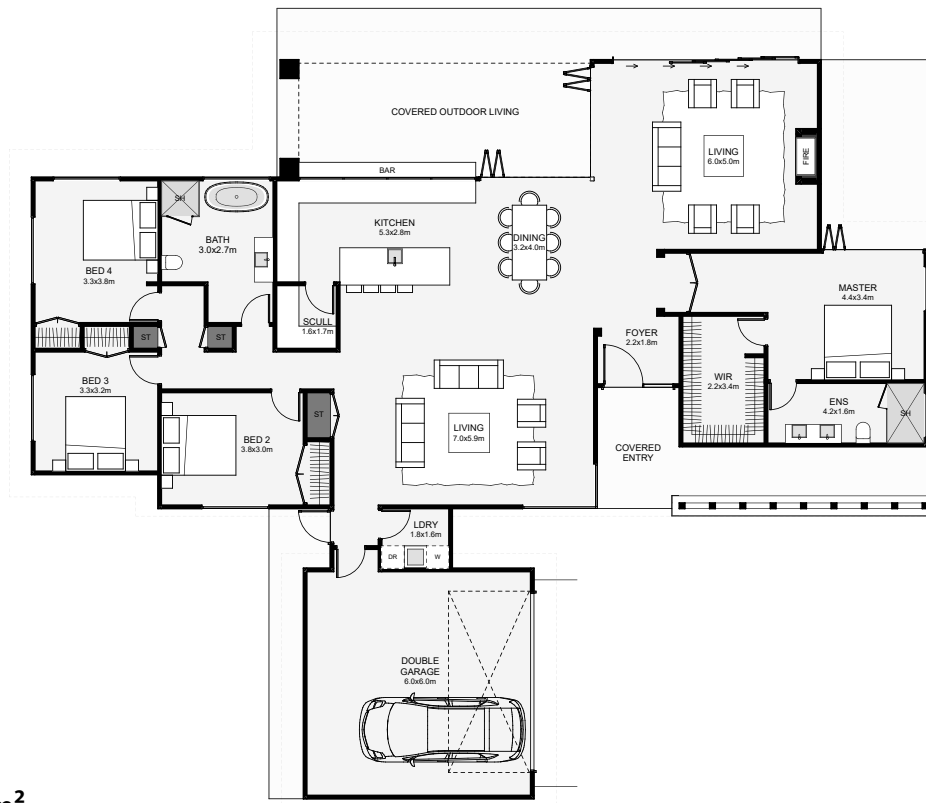


# FITZORY BEACH



This modern home is ready to entertain with generous spaces designed around a northern outlook. Nice features include the covered outdoor living, an optional outdoor kitchen bar, seamless indoor/outdoor flow through large, corner opening bi-fold doors. The master is also spacious with an extensive walk-in wardrobe and ensuite all separate from the other bedrooms. If you like modern, spacious homes, this is worth checking out!



Floor Area: 249m<sup>2</sup>

 2
  4
  2
  2
  24.0m
  19.8m

M. 021 931 013  
 E. [homes@buchananconstruction.co.nz](mailto:homes@buchananconstruction.co.nz)  
 W. [www.buchananhomes.co.nz](http://www.buchananhomes.co.nz)

