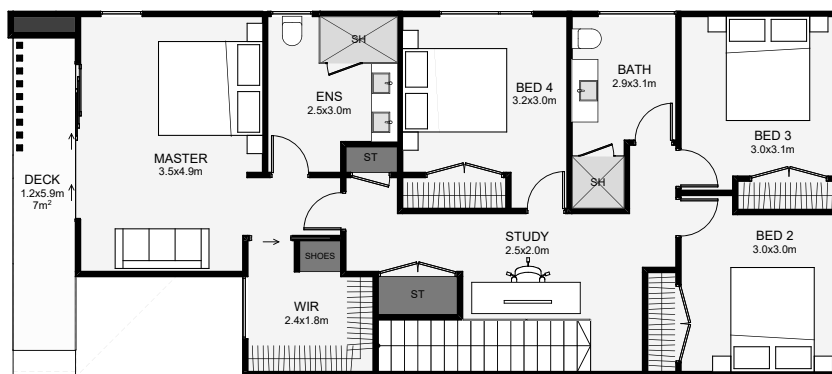
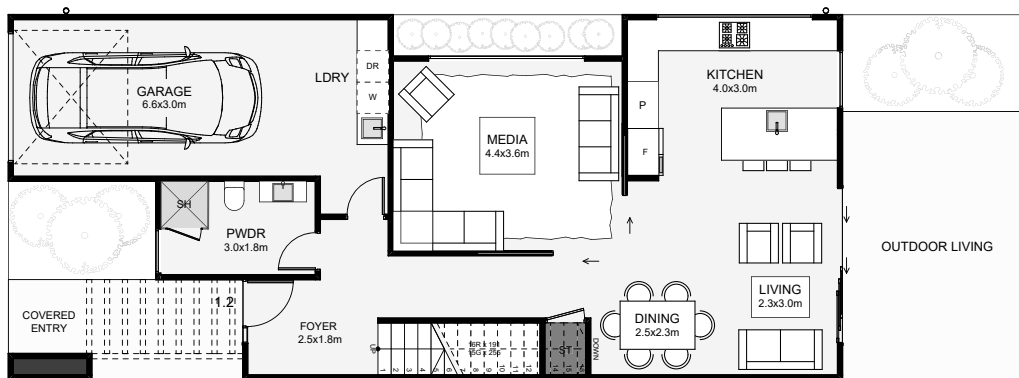


# FLATPOINT BEACH



This ultra-modern, four-bedroom townhouse is designed to feel more like a family home. Downstairs, there's dual living, both accessible to the kitchen and a private powder room. Upstairs, is an open study, four bedrooms and two bathrooms. The master enjoys a large walk-in wardrobe, an ensuite and access to a long balcony that will impress! This townhouse has all the design boxes ticked for anyone with modern taste!



Floor Area: 188m<sup>2</sup>

1  
 4  
 2.5  
 2  
 18.0m  
 7.0m

M. 021 931 013  
 E. [homes@buchananconstruction.co.nz](mailto:homes@buchananconstruction.co.nz)  
 W. [www.buchananhomes.co.nz](http://www.buchananhomes.co.nz)

